

MAKE-AT- HOME LONGHORN SCULPTURE



Tribute by Jan Mapes

Do you want to get hands-on and start sculpting like artists whose works are in the collection of the Briscoe Western Art Museum? Using simple materials you can find at home, you can create your very own longhorn sculpture. The Briscoe's extensive collection contains hundreds of artworks **cast in bronze** that depict bison, cattle, broncos, and cowboys. Get inspired by the artists we know and love, and follow these steps to get started.

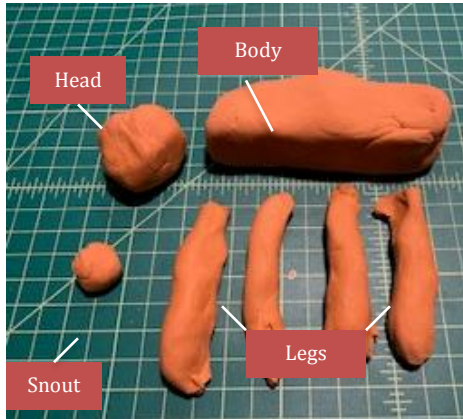
Step 1: Gather Materials

- Clay, Play-Doh, Model Magic
- Toothpicks
- Popsicle Stick
- Fork
- Butter Knife
- Stick



If you don't have every material on this list, don't worry. This is a great way to be resourceful and improvise, which is something all the best artists (and cowboys) do.

Step 2: Work the Clay



- Knead the clay until it is easy to work with.
 - Roll the clay into a large ball.
 - Break the clay into six small pieces and one large piece.
 - Mold the small shapes into four legs.
 - Make a head, a snout, and a torso.
- Set the remaining clay aside to use later.

Step 3: Put It All Together

- Push a toothpick or stick into each leg.
- Push each leg into the torso to create the body.
- Attach the snout to the head.
- Fix the head and the tail onto opposite ends of the body in the same manner as the legs.
- Adjust the body of your longhorn as needed to get the right shape.

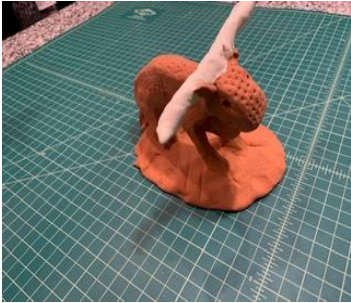


Step 4: Attach Horns

- Cover your popsicle stick **armature** with clay and shape it into a set of horns for your longhorn.
- Attach the horns at the base of the head, just above the longhorn's neck.
- Using extra toothpicks, a fork, or a butter knife, create texture and details on the surface of your longhorn (eyes, nose, hair, hooves, etc.).



- That's it. Now you have your very own longhorn sculpture to enjoy.



Step 5: Share!

Take a photo of your new masterpiece and share it with us online.

Be sure to tag [@BriscoeMuseum](https://www.instagram.com/BriscoeMuseum) and use the hashtags [#BeyondTheBriscoe](https://www.instagram.com/hashtag/BeyondTheBriscoe) and [#TheWestStartsHere](https://www.instagram.com/hashtag/TheWestStartsHere) so we can find your awesome work of art.

Armature—a framework on which a sculpture is molded with clay or similar material.

Cast—to make an object of a particular shape by pouring liquid metal, plastic, or plaster into a mold. A **cast** can be made from clay models, metal, stone statuary, etc.

Bronze—A **bronze** sculpture, often simply called a **bronze**, is a three-dimensional piece of art made by pouring hot, liquefied **bronze** into a mold and leaving it to solidify. **Bronze** is a metal made up of a mixture of copper and tin.